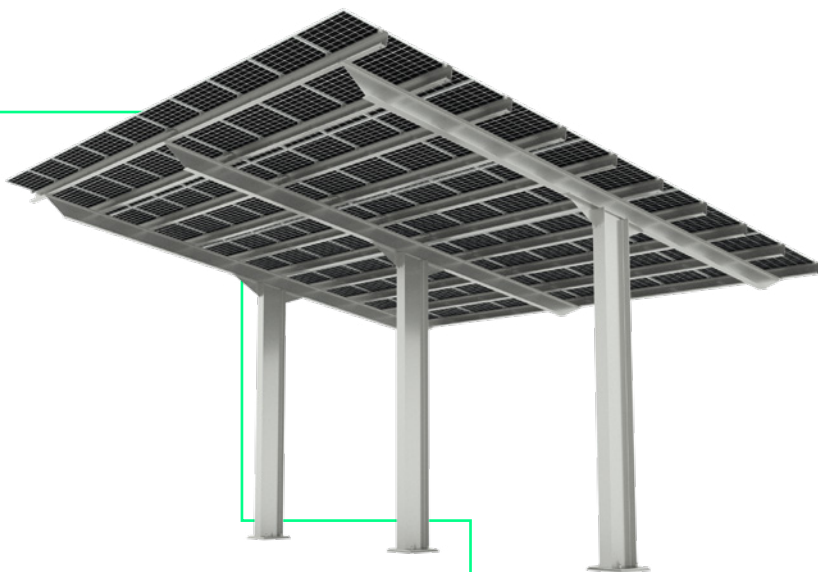


# SOLAR MOUNTING

## C2-TYPE SOLAR CARPORT SYSTEM C2

The Solar Mounting C2-Type carport system offers a dual purpose solution for large scale projects, that provides shelter for vehicles and their occupants whilst simultaneously generating clean energy.

- Made from hot and cold rolled galvanised steel sections.
- Option for steelwork to be finished in standard RAL colours.



**DIGITAL COPY**  
Scan the QR code  
for a digital copy of  
the datasheet.

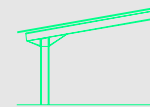


### DISCOVER THE ENTIRE C2-TYPE RANGE

The C2-Type range offers three configurations of carport options for a range of panels:

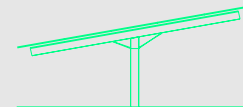
#### C2.1 - C2-TYPE SYSTEM

Mono pitch ■ Single bay



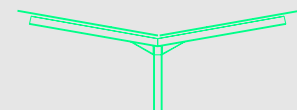
#### C2.2 - C2-TYPE SYSTEM

Mono pitch ■ Two bay



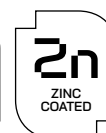
#### C2.3 - C2-TYPE SYSTEM

Duo pitch ■ Two bay



To discover more about the range  
or to enquire, please visit:

[www.solarmounting.co.uk](http://www.solarmounting.co.uk)

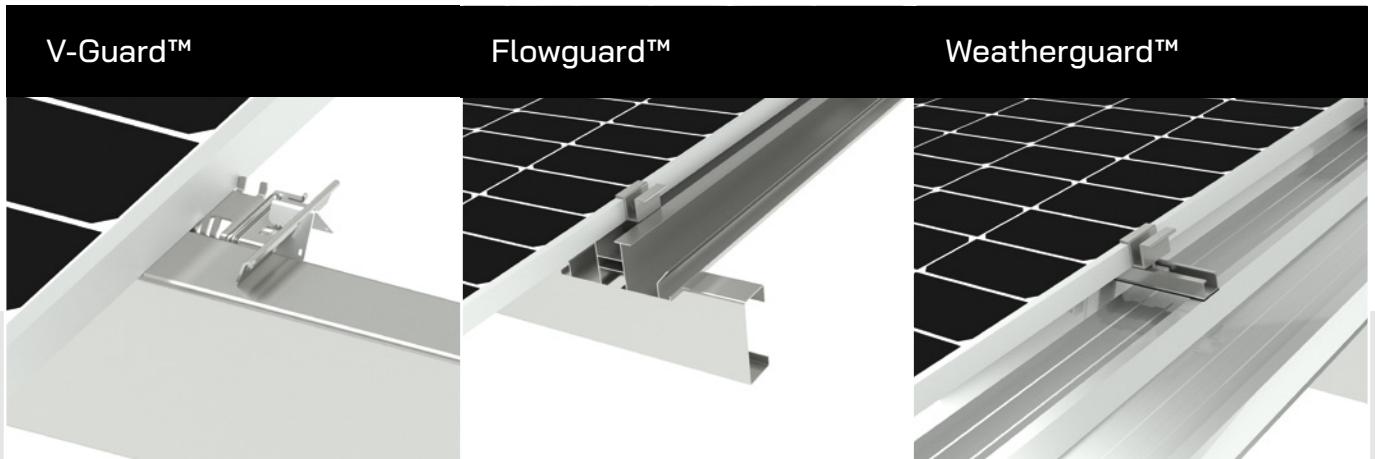


# C2-TYPE SOLAR CARPORT SYSTEM C2



TECHNICAL SPECIFICATIONS		
Application	Commercial utility scale	
System types	3 frame options	
Module orientation	Landscape and portrait	
Module arrangement	2-4 panels portrait per side, 4-8 panels landscape per side	
Inclination	2-15° (subject to panel manufacturers recommendation)	
Material	S355, S450, ZM310, ZM620	Columns, purlins, rafters, joiners, sliding clamps
	Aluminium alloy 6063 – T6	Panel clamp

## Panel Mounting Options



- Panels fixed directly to purlins
- Underside of panels exposed to allow for bifacial panels
- Clamp panels from below for ease of installation

- Panels fixed to aluminium channels to direct rainwater
- Underside of panels exposed to allow for bifacial panels
- Gutters and downpipes can be included as optional extras

- Trapezoidal roof sheet fixed to purlins for full weather protection
- Panels fixed to standard roof system
- The underside of the panels is shielded to deter vandalism
- Gutters, downpipes and external perimeter flashings can be included as optional extras

## HAVE A PROJECT IN MIND?

Call us on +44 (0)330 174 8394 ■ Email us at [info@solarmounting.co.uk](mailto:info@solarmounting.co.uk)

